

SUMMARY

Wires



Image is for illustrative purpose only

| | |
|------------------|-------------------------|
| Series | 0S |
| Termination type | No contacts / Accessory |
| IP rating | 61 |
| AWG wire size | 0.00 - 0.00 |
| Cable Ø | 0.00 - 0.00 mm |
| Status | obsolete |

Download

[Request a quote](#)

[Catalog](#)

TECHNICAL DETAILS

Mechanics

| | |
|-------------------|--|
| Shell Style/Model | BRR*: Cap spring loaded dust cap for ERA,ERN and EG receptacle or PSA and PK fixed receptacle |
| Keying | No keying |
| Housing Material | PSU (Polysulfone) shell and collet nut, nickel plated [SAE AMS QQ N 290] brass latch sleeve and mid pieces |
| Variant | G : Gray |
| Weight | .50 g |

Performance

| |
|---------------|
| Configuration |
| Insulator |
| Rated Current |

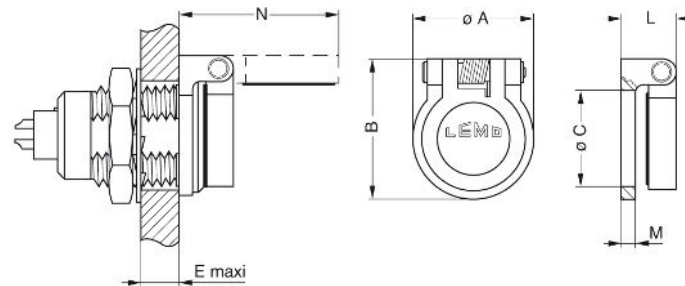
Others

Endurance (Shell): 5000 mating cycles
Temp (min / max): -50°C / +150°C

LEMO products and services are provided "as is". LEMO makes no warranties or representations with regard to LEMO product & services or use of them, express, implied or statutory, including for accuracy, completeness, or security. The user is fully responsible for his products and applications using LEMO components.

Axes material: Nickel-plated brass
Maximum operating temperature: 100°C
Watertightness: IP61 according to IEC 60529

DRAWINGS



No keying

Dimensions

| | A | B | C | E | L | M | N |
|-----|------|------|------|------|------|------|------|
| mm. | 11 | 13.3 | 9 | 5.8 | 5 | 1.2 | 15.3 |
| in. | 0,43 | 0,52 | 0,35 | 0,23 | 0,20 | 0,05 | 0,60 |

RECOMMENDED BY LEMO

Tools

LEMO products and services are provided "as is". LEMO makes no warranties or representations with regard to LEMO product & services or use of them, express, implied or statutory, including for accuracy, completeness, or security. The user is fully responsible for his products and applications using LEMO components.